

T07.4

1 DORMITORIOS
C/ PALLARS 418, PLANTA 4ª P 6
(418_4-6)

SUPERFICIES

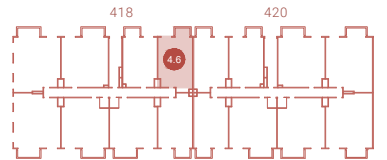
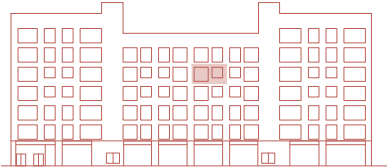
Sup. Útil vivienda: 46,59 m²

Sup. Útil terraza: 3,68 m²

Sup. Const. vivienda: 53,54 m²

Sup. Const. terraza: 3,96 m²

Fachada C/Pallars



By

GRUPO
ROSALES

Sales Advisor

