

T05.1

2 DORMITORIOS +
C/ PALLARS 418, PLANTA 1ª P 4
(418_1-4)

SUPERFICIES

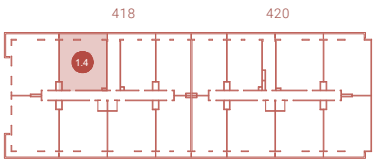
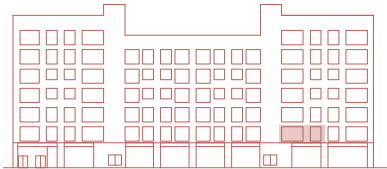
Sup. Útil vivienda: 60,21 m²

Sup. Útil terraza: 7,63 m²

Sup. Const. vivienda: 67,85 m²

Sup. Const. terraza: 8,73 m²

Fachada C/Pallars



By

GRUPO
ROSALES

Sales Advisor

